

September 1, 2015

PROJECT OF THE MONTH

CerMark is a great product to work with in achieving a dark mark on metal. The spray will be the easiest application. Shake it well and apply a nice even coat. Allow it to dry and engrave! Be sure to soak the tip in denatured alcohol when not in use to avoid clogging.



Settings & Tips for CerMark

There are a few things to always keep in mind:

- Must use UNCOATED metal.
- Use 100% power, always.
- Use speed settings equal to laser wattage. 50-watt, 50% speed.
- Slow the speed down, if needed to promote bonding. Do not adjust power.

LaserBits is having a September Two-Can Special on CerMark Cans for \$134. Call or order online part SUS 236.

YOU TUBE VIDEO OF THE MONTH

Learn more [about spraying CerMark](#) on your metal.

FEATURE: COURSE HIGHLIGHT

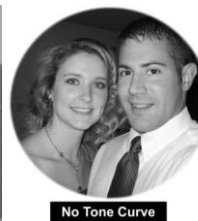
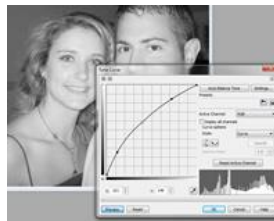
For more information about this project visit [The Learning Center](#) and locate **Course 10**.

COREL KNOWLEDGE



Using the Tone Curve feature inside PHOTO-PAINT will allow you to engrave a better quality photo.

- Go to Adjust>Tone Curve.
- Make adjustments increase contrast between the subject and the background.



COMING EVENTS

October 2-3, 2015 [The NBM Show Booth# 22](#); **Location:** Crown Plaza Denver Int'l Airport Convention Center

October 23-24, 2015 [Great Lakes Awards & Personalization Expo Booth #309](#); **Location:** Seagate Convention Center - Hall C

Get the Laser Settings Calculator App on your mobile device.



Please send questions & comments to laseru@laserbits.com